

Helpful Guide to Services

School Age and Beyond

Presented by Donna Febo, SD Broker & Mom

Website: www.mapsli.com

Phone: 631-599-0165



My Applied Personal Supports

www.mapsli.com

Changes Currently Happening to Medicaid and Medicare - CMS

- Medicaid and Medicare are in the process of moving to a Managed Care model. The Medicaid Redesign under the new HCBS 1115 waiver is initiating sweeping changes to the way we have been previously implementing supports and services to individuals with Developmental and Intellectual Disabilities. This is a 5 year plan that began on July 1, 2018 and runs through June 30, 2023
- The changes to Medicaid are happening in first 2-3 years. The 30 or so Medicaid Service agencies throughout Long Island are being absorbed into 1 of 3 Care Coordination Organizations (CCO). The intent is to no longer have a “silo” model of service and more of a Complete- Umbrella design.



My Applied Personal Supports

www.mapsli.com

Student Graduates New to OPWDD:

Families should be aware that OPWDD needs your help to prevent a lapse in service for children graduating from the school system. Local school districts provide developmental disability services, including special education, until the individual's twenty-first birthday. Families can begin the process of determining eligibility and planning for services ahead of time, and at any time.

"We strongly urge you not to wait until the "school bus stops coming" before beginning this process-ideally, transition planning for students should begin at age **fifteen**. If your child is older than fifteen, you are encouraged to start the process as soon as possible. This allows time to find the best supports, develop a plan everyone is happy with, and do so at a more relaxed pace."

*ref: OPWDD Guidance for Families and Caregivers



My Applied Personal Supports

www.mapsli.com

At 18 years of age persons with development disabilities should have the following in place: OPWDD recommends some services begin at age 15

- **NYS Medicaid** - (can be in place as early as age 8, earlier if otherwise needed for a specific disability or service i.e. CP, Downs)
- **Care Management** - (CM) individual should be utilizing the supports of a CM (Care Manager) assigned by one of the 3 Care Coordination Organizations (CCO's) available on Long Island- Advanced Care Alliance (ACA), Tri- County or Care Design
- **Social Security Income (SSI)** – Individuals are eligible the 1st full month s/he is 18 years old. Note: Some families with lower income levels may qualify for SSI payments prior to 18 years.
- **Supplemental Nutrition Assistance Program (SNAP)**- (formally known as food stamps) All individuals receiving SSI payments, with a "rent" component are eligible for SNAP payments of up to \$193 per month.
- **Guardianship?** – Guardianship is a personal choice and not a requirement Supported Decision Making is gaining recognition across NY and recognized as legal decision making in both Texas and Indiana.



My Applied Personal Supports

www.mapsli.com

With Medicaid and Care Management in place (Traditional model or Self Direction Model) the following Supports become available:

- **Community Habilitation:**
The ability to hire Direct Support Professionals (DSP) to work on goals in the community and/or in the home with the individual. Often times services are utilized after school and on weekends.
- **Family Support Services/ Respite:**
Yearly reimbursement up to \$1,000 (\$3,000 with SD) Respite services such as: Vacation program, Saturday program and site based overnight services
- **Consumer Directed Personal Assistance Program (CDPAP)** – Department of Health- Nursing overseen.
Individual hires staff to assist with tasks of daily living within the home. – Individuals over 21 (under 21 with special permissions) may hire his/her parent, or family member living in the home.
- **Day Habilitation Program** (upon graduation 18-21 yrs.):
Day programs may take 2 forms. Individuals are evaluated based on need and disability and will either qualify for one or the other.
 - Program without Walls (PWW) - Community based similar to most "WEP" programs
 - Site Based - Individuals remain mostly in the Day Hab building and work on skills and/or goals within.
- **Supported Employment (SEMP):**
Individual is hired to work in the community at or above Minimum wage. Work supports are provided for that individual, based on need. – most often work is limited to less than 20 hours a week and is often combined with other services.



My Applied Personal Supports

www.mapsli.com

Supported Employment (SEMP)

Employment Supports Can be utilized prior to graduation. Several programs may be put in place for individuals who are interested in gainful employment prior to graduation as well as after.

**** following graduation the NYS labor law limits anyone who is not receiving school based supports from volunteering at a For Profit Business ****

- **Adult Career and Continuing Education Services- Vocational Rehabilitation (ACCES-VR)** – job development and coaching are the primary functions. Acces- VR also offers Vocational Counseling, Assessments, driver training, modifications to vehicles if needed. This is a Federally funded program and must be utilized prior to the individual using any other available employment tool.- such as SEMP thru an SD Budget.
- ** With the support of ACCES-VR and thru the Boces Programs available to students, Project Search can be a part of the individual's plan if qualifications are met.****
- **Pathways to Employment** – (HCBS waiver required) Individualized planning process that helps individuals identify career or vocational direction. Service typically lasts 12 months and is accessible while still receiving School based services.
- **Employment Training Program** – (HCBS waiver required) Individuals are offered the opportunity to work in an internship that will lead to permanent employment in a community business. Within a 12 to 18 month period an individual works for a company and is paid a salary by OPWDD with the understanding that the individual will be hired by the company when the internship concludes.



My Applied Personal Supports

www.mapsli.com

Does My Child Qualify?

OPWDD defines Development Disabilities as follows:

Developmental Disabilities are special conditions that may occur anytime from before a baby's birth, up until age 22. A **developmental disability** may take different forms. They are different from "developmental delays," that show up as a lag in one or more areas of growth or skill. Developmental delays can be reduced by providing Early Intervention services and special help in the classroom. A **developmental disability** condition may cause a child to develop more slowly all along, or to have physical difficulties and limitations, or have trouble learning and growing like other children in general. Sometimes an individual has more than one condition or disability.

*ref: OPWDD Guidance for Families and Caregiver



My Applied Personal Supports

www.mapsli.com

Does My Child Qualify?

Developmental Disabilities that qualify for OPWDD services include:

- ◆ Intellectual disability
- ◆ Autism
- ◆ Cerebral Palsy
- ◆ Epilepsy
- ◆ Familial dysautonomia
- ◆ Neurological Impairment (injury, Malformation, or disease involving the Central Nervous System).



My Applied Personal Supports

www.mapsli.com

How do I Start?

Steps to take for determining eligibility for OPWDD Services:

1. Call the local LIDDRO at 631-434-6000
2. Follow the prompts for "Front Door"
3. Set Up an appointment for a Front Door Meeting with the LIDDRO or a Phone Conference.
4. Participate in the Front Door Needs Assessment or ddp2 (some needs can be met through Family Support Service and some needs will necessitate Medicaid Enrollment.)
5. A letter of Disability or an NOD (Notice of Decision) will be issued and individual will be determined eligible for Family Support Services.
6. Medicaid enrollment can be facilitated by a Non-MSD (non- Medicaid service coordinator). Applications are obtained at the local DSS (Department of Social Services). For our region it's the Riverhead office.



My Applied Personal Supports

www.mapsli.com

Eligibility Determination:

1st Step
Review

- DDRO clinical staff review the eligibility request to determine eligibility

2nd Step
Review

- If eligibility request is forwarded for a 2nd Step Review, a committee of DDRO clinicians evaluate the referral materials and any additional information that has been provided by the person.

3rd Step
Review

- 3rd Step Reviews are done by an Eligibility Review Committee of licensed practitioners not involved in the 1st and 2nd Step Reviews.



My Applied Personal Supports

www.mapsli.com

Required Documents:

- ☐ Psychological reports which include assessment of intellectual functioning ("IQ test")
- ☐ A developmental/psychosocial history report, or other report that shows that the person became disabled before the age of 22 (this is required for all eligibility requests)
- ☐ For Conditions other than Intellectual Disability, a medical or specialty report that includes health status and diagnostic findings to support the qualifying diagnosis
- ☐ Adaptive behavior functioning assessment
- ☐ A recent general medical assessment report should be included in all eligibility requests
- ☐ In some cases, the DDRO may require additional information to determine eligibility (for example an A-DOS)



My Applied Personal Supports

www.mapsli.com

Self-Determination & Self-Direction

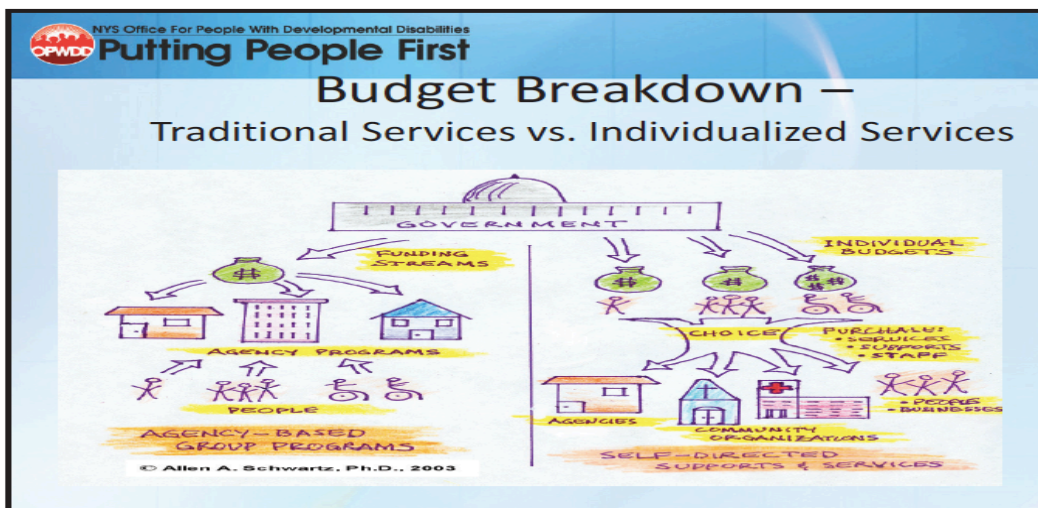
- Self-Determination is the philosophy that all people have the freedom to develop their own life plan.
- Self-Direction is based on the underlying principles of self-determination, person centered planning and practices.



My Applied Personal Supports

www.mapsli.com

Traditional Services Model vs. Self-Direction Model



My Applied Personal Supports

www.mapsli.com

The Self Direction Model and Budget

- Self Direction (SD) is a model of service delivery by which the individual determines (with the assistance of a Circle of Support (COS) or Interdisciplinary Team (IDT)), how monies are spent to support him/her in all aspects of his/her day.
- The COS/IDT meets initially to create the budget and Life Plan. Then quarterly to maintain the budget and justify the expenses.
- COS/IDT consists of:
 - Individual
 - Parent/guardian if applicable
 - CM- Care Manager
 - Broker
 - FI- Fiscal Intermediary
 - Any other persons important to the individual



My Applied Personal Supports

www.mapsli.com

Self Direction Budget Components

- Self Hire - Community Habilitation
- Self Hire - In-Home Hourly Respite
- Self Hire - SEMP
- Brokerage
- IDGS: camp, classes, transportation funds, etc.
- Live in Caregiver (if applicable)
- Housing Subsidy (if applicable)
- Family Reimbursed Respite
- OTPS: clothing, phone, internet, etc.
- Direct provider Purchase Services: agency respites or employment services.



My Applied Personal Supports

www.mapsli.com

IDGS: Individual Directed Goods & Services

Individual Directed Goods & Services

On the lines below, list the item being purchased.

	Category
1	Camp
2	Community Classes & Publicly Available Training/Coaching
3	Coaching/education for parent(s), spouse and advocates involved in the person's self-directed services
4	Clinician Consultants, Independent Contractors - (Non-Direct Service Provision --Clinical Consultation Specialties)
5	Clinician (Direct-Provision of Therapies/Therapeutic Activities Not Otherwise Funded in the state plan)
6	Health Club/Organizational Memberships/Community Participation
7	Household-Related Items and Services
8	Paid Neighbor
9	Self-Directed Staffing Support
10	Transition Programs for Individuals with IDD
11	Transportation



My Applied Personal Supports

www.mapsli.com

OTPS: Other Than Personal Services

Item
Phone service – cell and/or land line
Internet
Software related to the individual's disability
Staff activity fees
Staff advertising/recruitment costs
Staff training
Personal Use Transportation
Clothing
Board Stipend (Food Subsidy)
Utilities
Other Goods and Services that Increase Independence
Other Goods and Service Related to Health and Safety



My Applied Personal Supports

www.mapsli.com

References:

- Mapsli.com
- Opwdd.ny.gov
- Socialsecurity.gov (SSI)
- Humanservicesed.org (Innovations)
- Lifssac.com
- Nyselfd.org
- Longislandcssandfriends.com
- Parenttoparentnys.org
- Sanys.org
- Soyan.org



My Applied Personal Supports

www.mapsli.com

Questions?



My Applied Personal Supports

www.mapsli.com